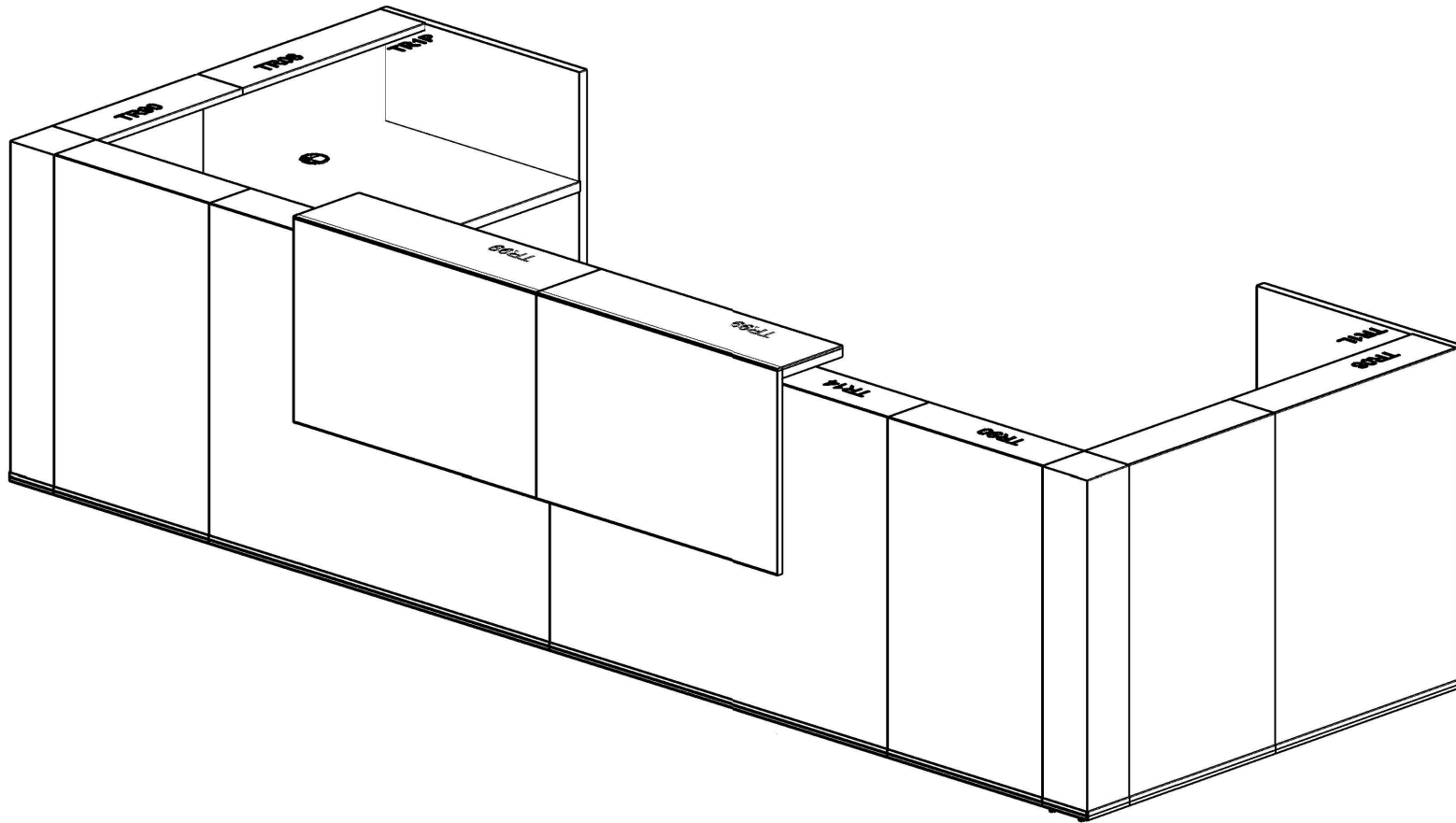


.mdd



TRA32

1 	2 	3 	4 	5 	6 	7
--------------	--------------	--------------	--------------	--------------	--------------	--------------

KOLEJNOŚĆ MONTAŻU
MIMOŚRODÓW.

THE FITTINGS SEQUENCE OF THE
CAMs.

DIE MONTAGEABFOLGE VON
EXZENTERN.

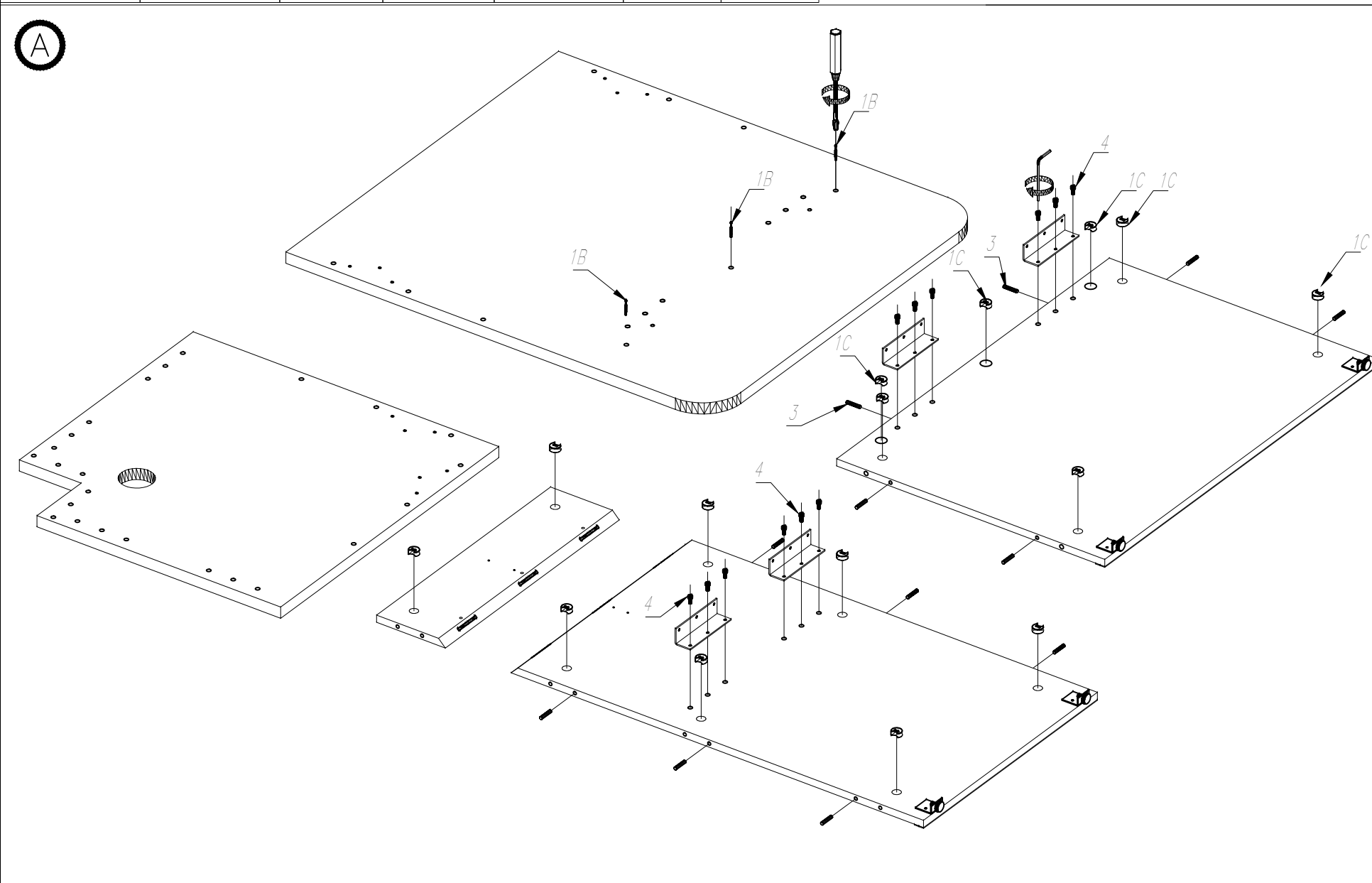
1

2

3

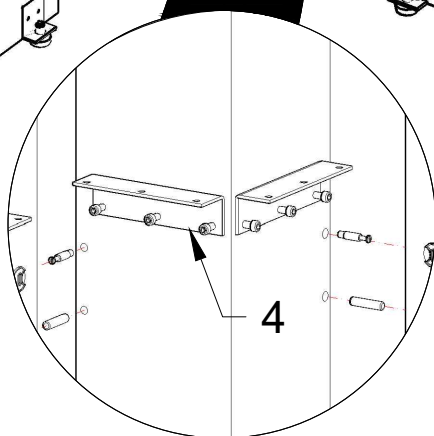
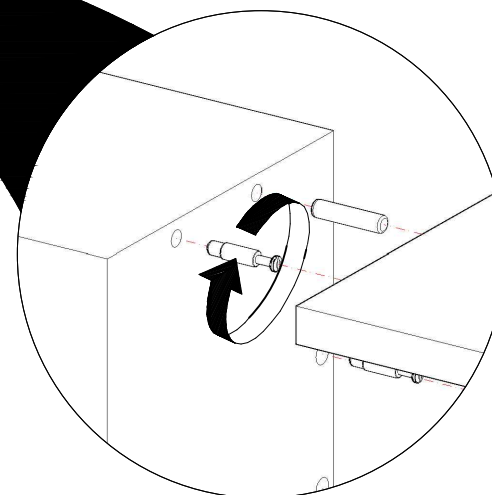
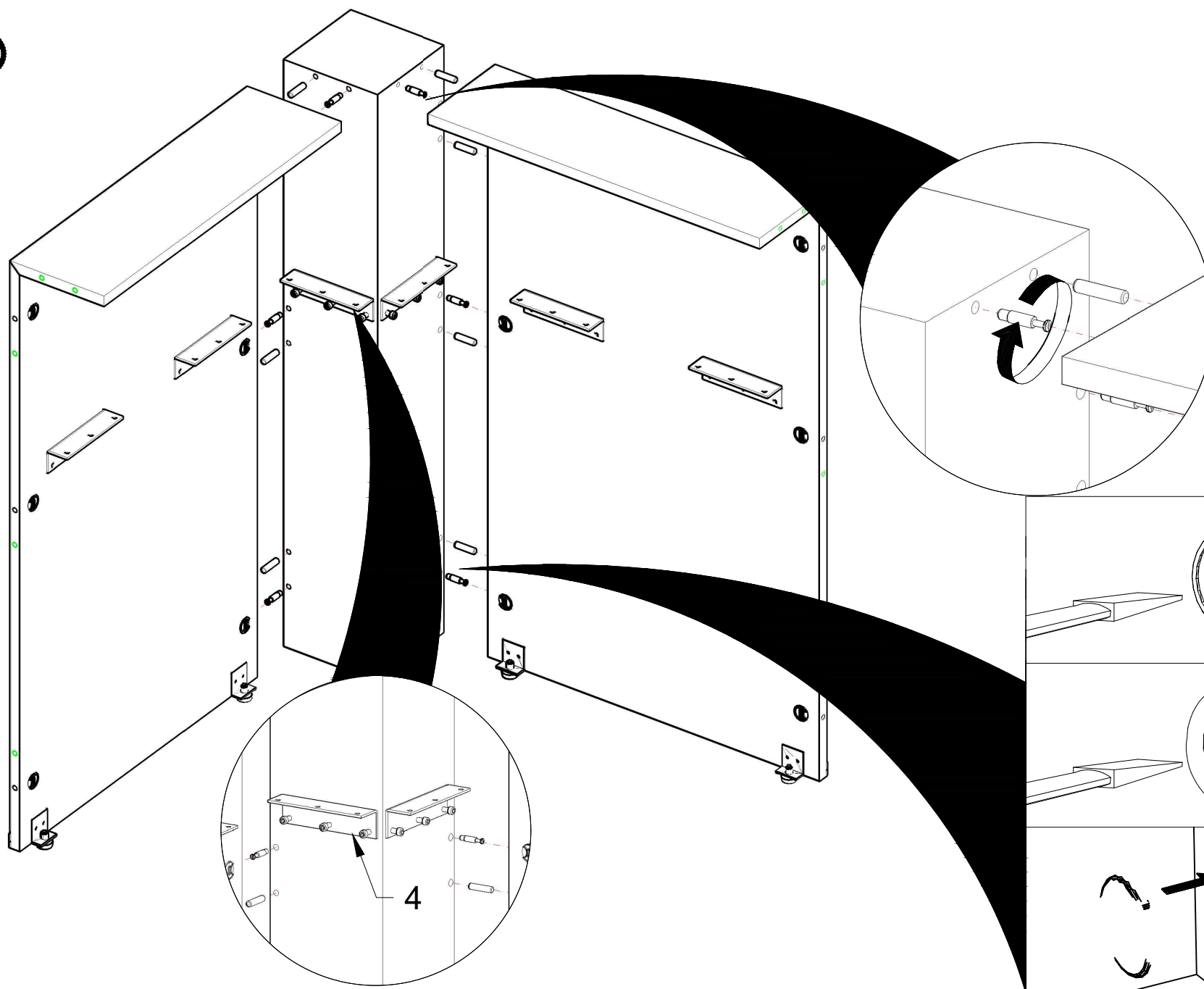
4

5

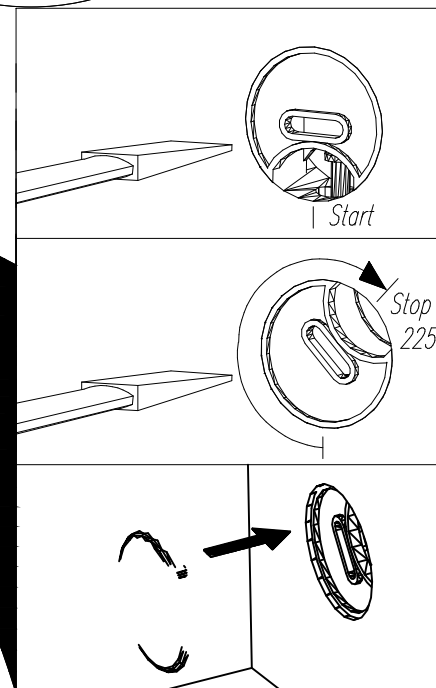




E

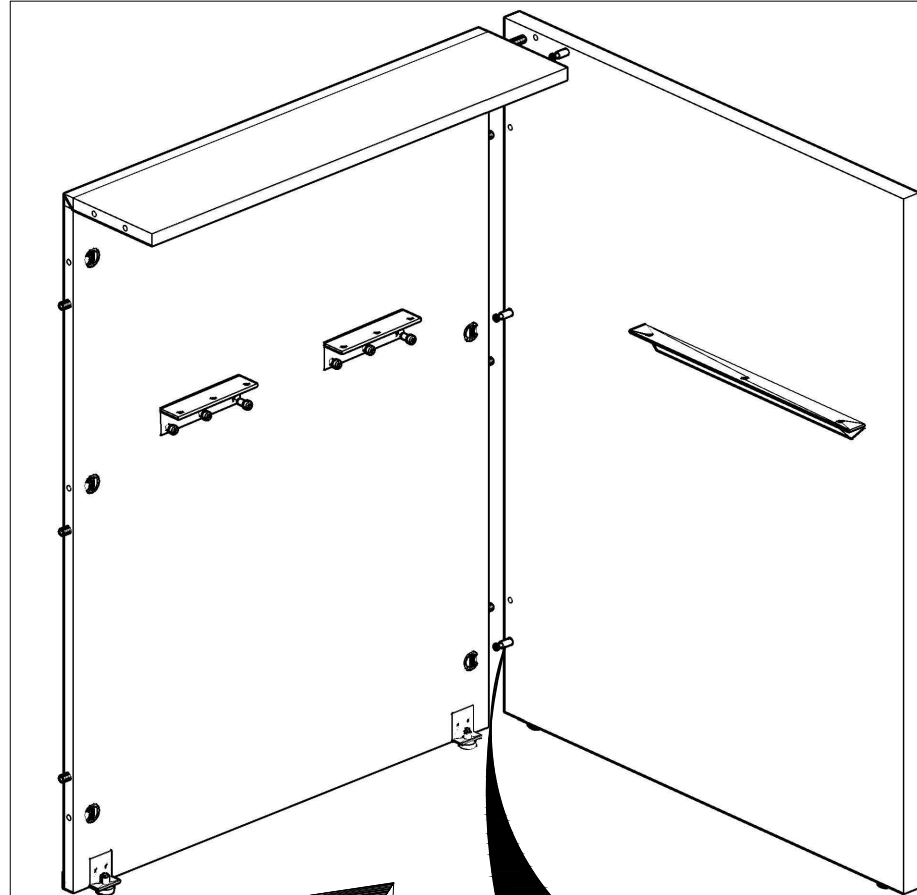


4

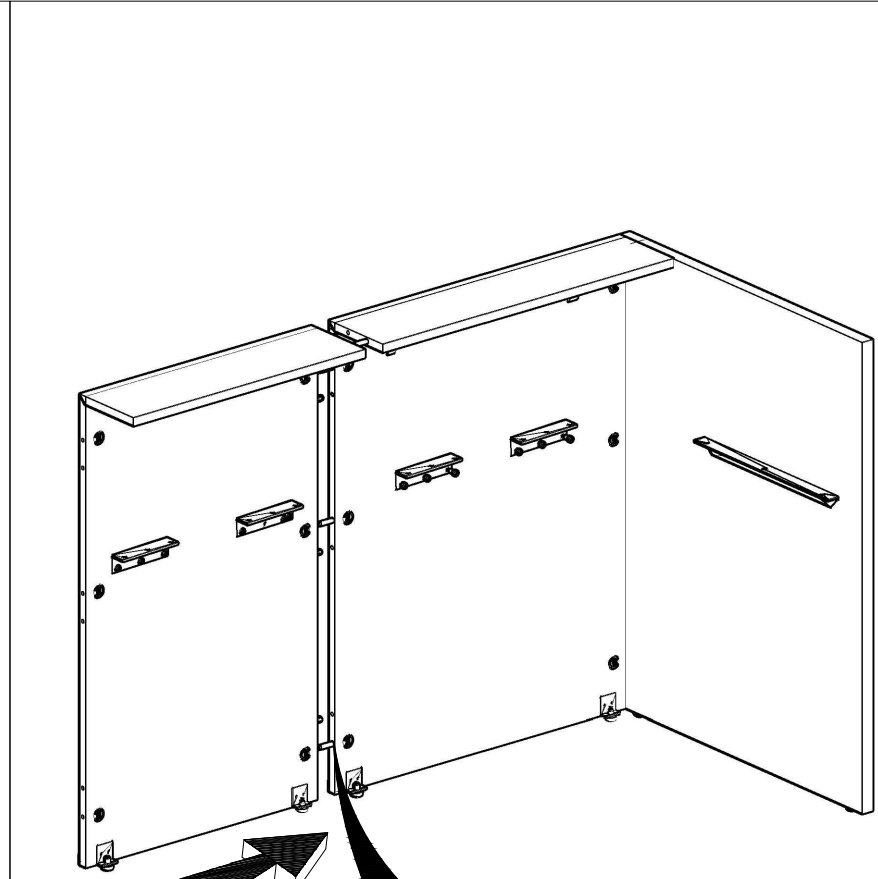


Start

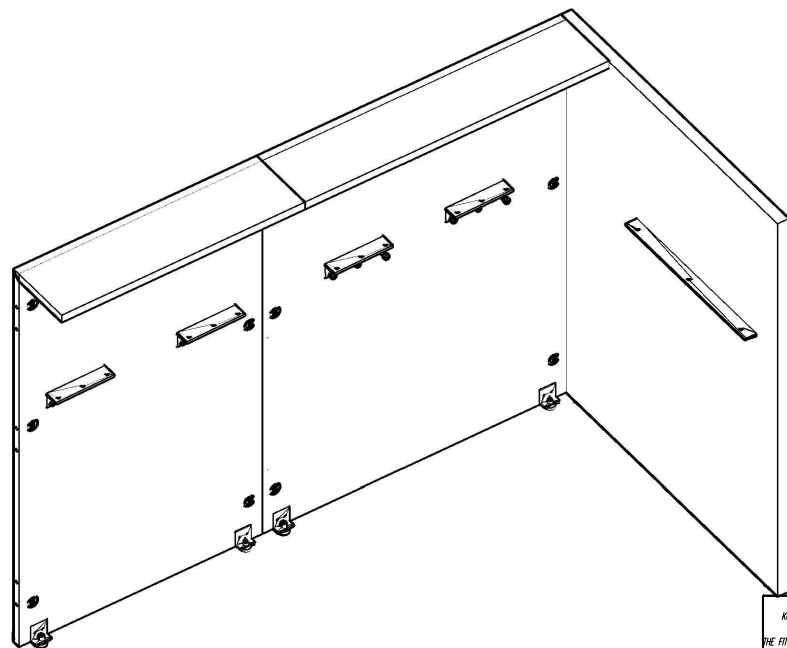
Stop
225°



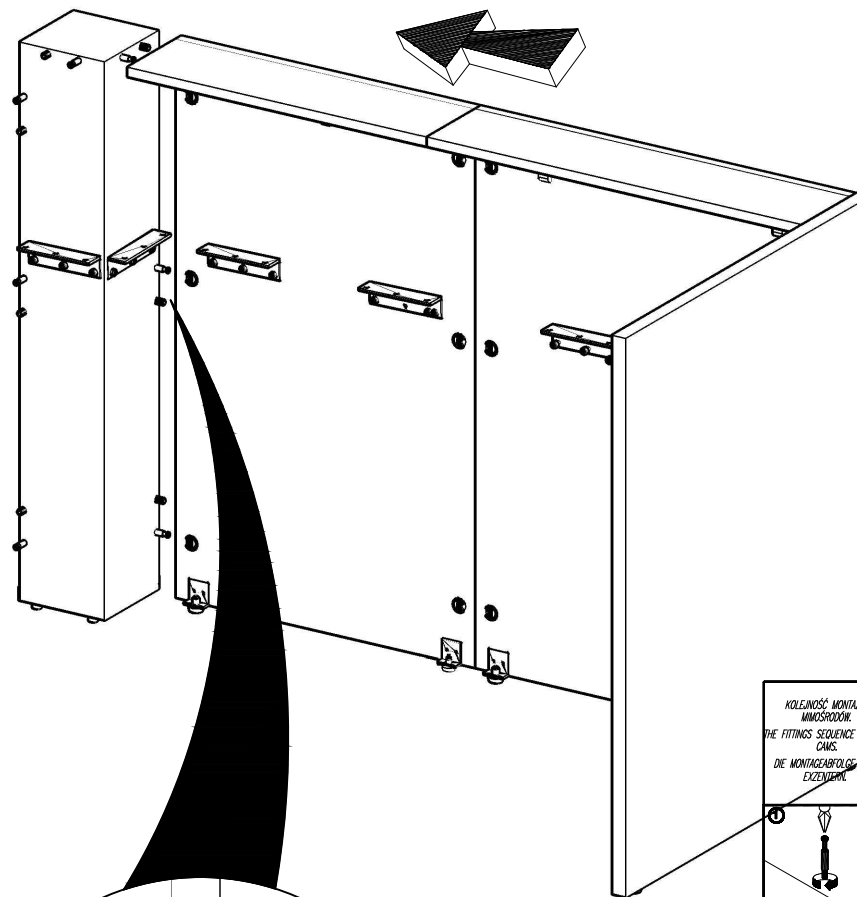
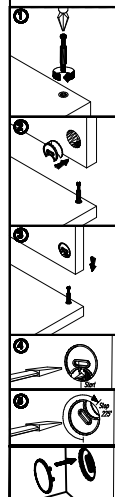
- KOLLENDRE MONTEUR
ANFANGS
THE FITTING SEQUENCE OF THE
CABINETS
DIE MONTAGEFOLGE VON
EXZENTRIK
1. Insert the pin into the hole of the vertical rail.
 2. Insert the pin into the hole of the horizontal rail.
 3. Insert the pin into the hole of the vertical rail.
 4. Insert the pin into the hole of the horizontal rail.
 5. Insert the pin into the hole of the vertical rail.
 6. Insert the pin into the hole of the horizontal rail.
 7. Insert the pin into the hole of the vertical rail.
 8. Insert the pin into the hole of the horizontal rail.
 9. Insert the pin into the hole of the vertical rail.
 10. Insert the pin into the hole of the horizontal rail.



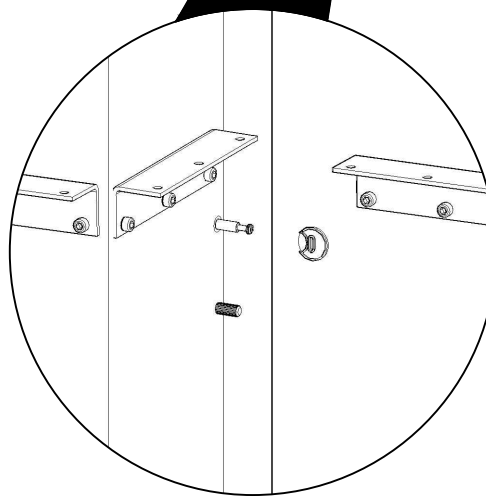
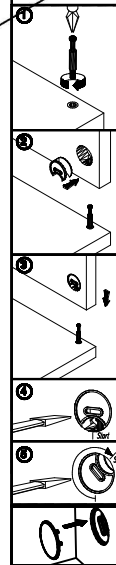
- KOLLENDRE MONTEUR
ANFANGS
THE FITTING SEQUENCE OF THE
CABINETS
DIE MONTAGEFOLGE VON
EXZENTRIK
1. Insert the pin into the hole of the vertical rail.
 2. Insert the pin into the hole of the horizontal rail.
 3. Insert the pin into the hole of the vertical rail.
 4. Insert the pin into the hole of the horizontal rail.
 5. Insert the pin into the hole of the vertical rail.
 6. Insert the pin into the hole of the horizontal rail.
 7. Insert the pin into the hole of the vertical rail.
 8. Insert the pin into the hole of the horizontal rail.
 9. Insert the pin into the hole of the vertical rail.
 10. Insert the pin into the hole of the horizontal rail.

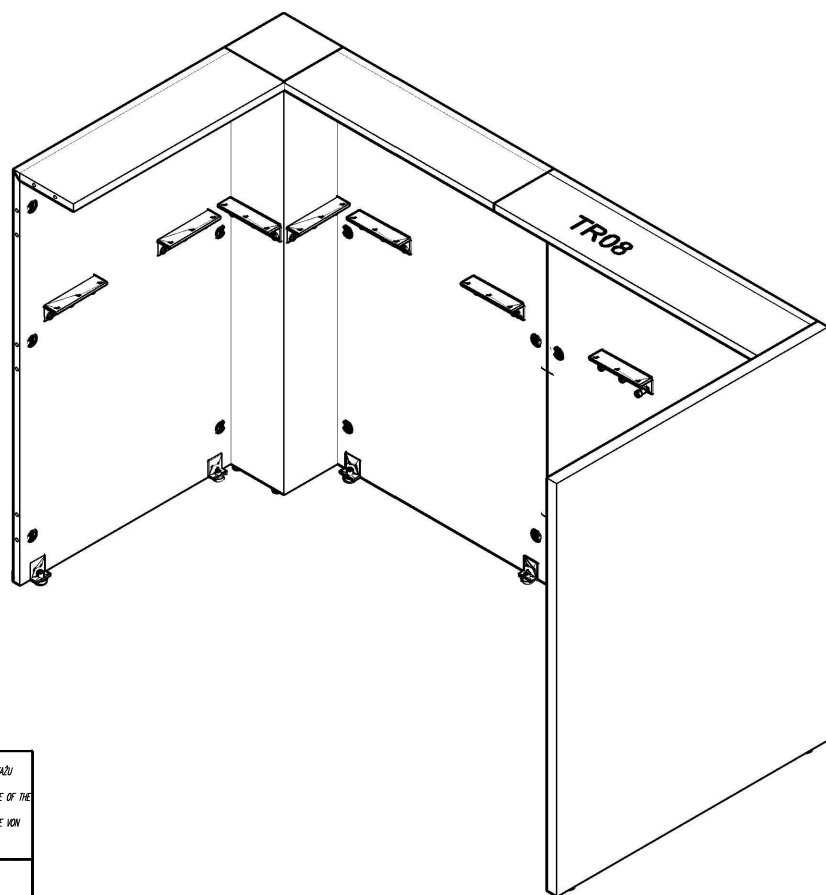


KOLEJNOŚĆ MONTAŻU
MIMOŚRODKIEM.
THE FITTING SEQUENCE OF THE
CAMS.
DIE MONTAGEABFOLGE VON
EXZENTERN.

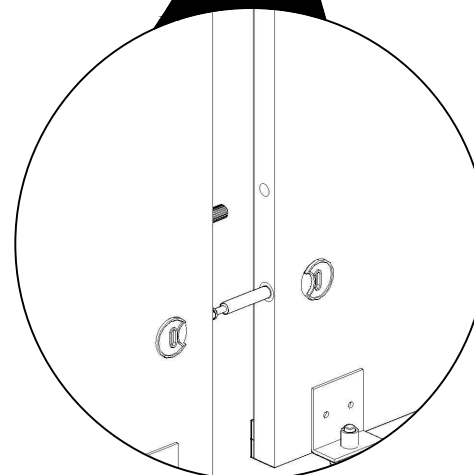
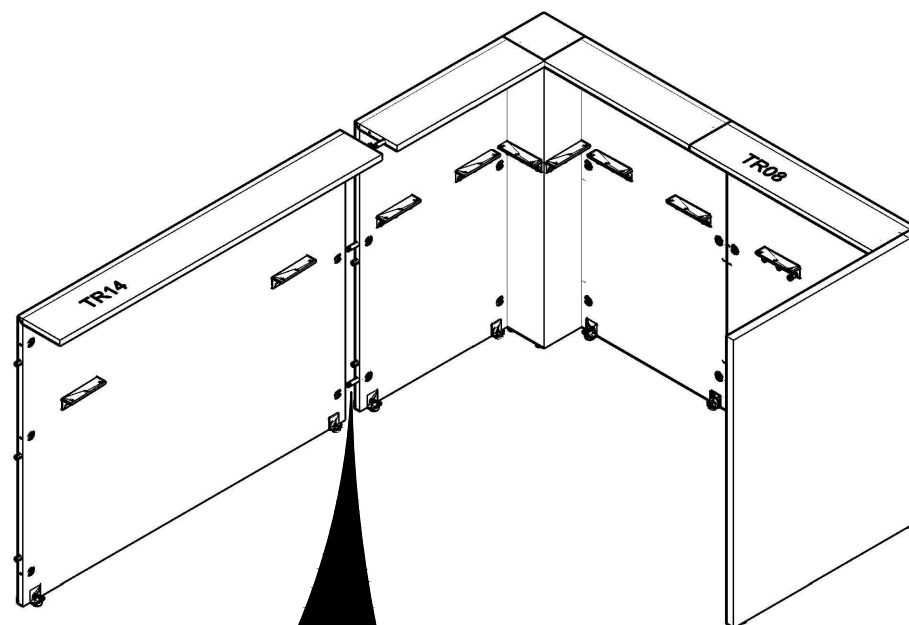
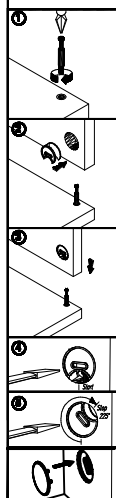


KOLEJNOŚĆ MONTAŻU
MIMOŚRODKIEM.
THE FITTING SEQUENCE OF THE
CAMS.
DIE MONTAGEABFOLGE VON
EXZENTERN.

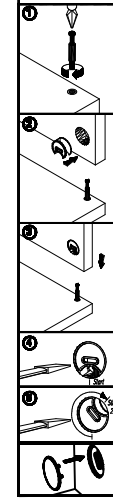


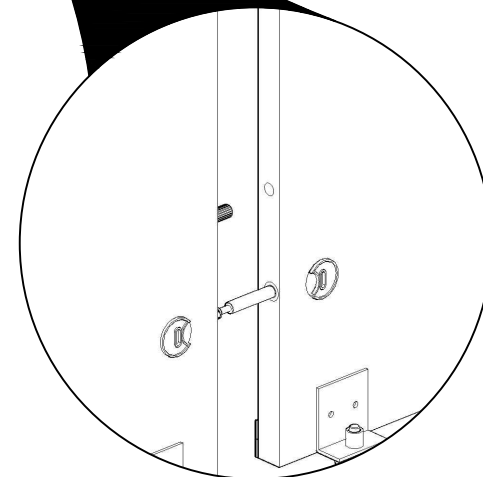
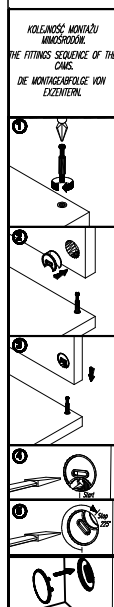
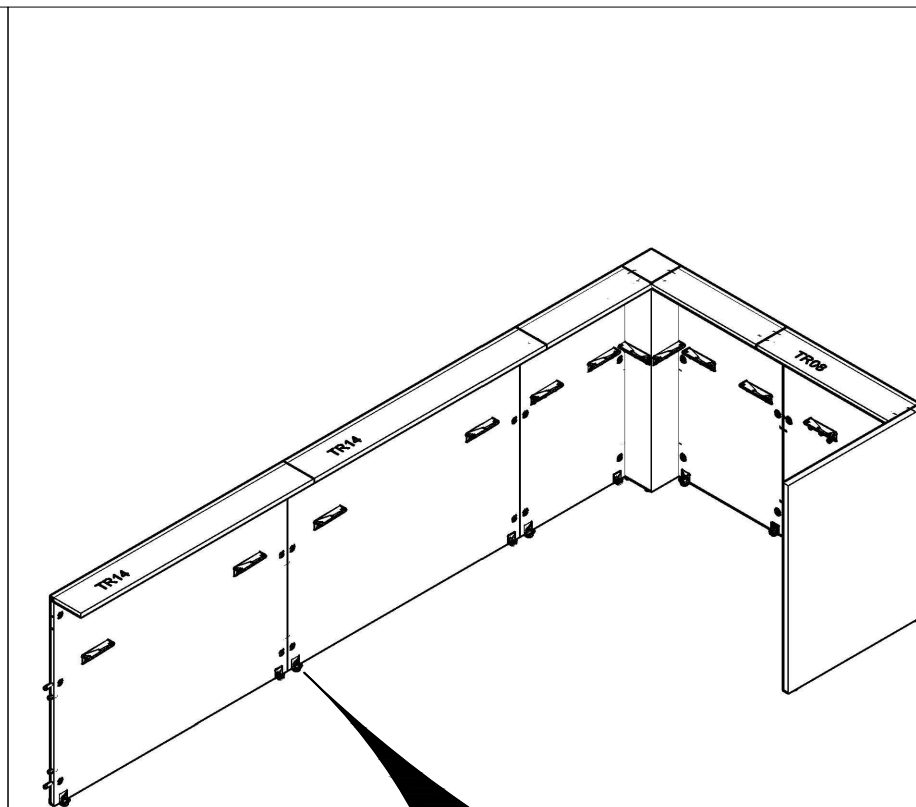
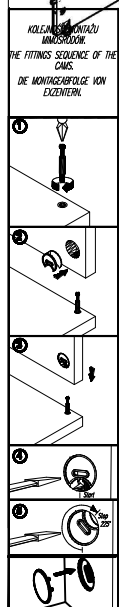
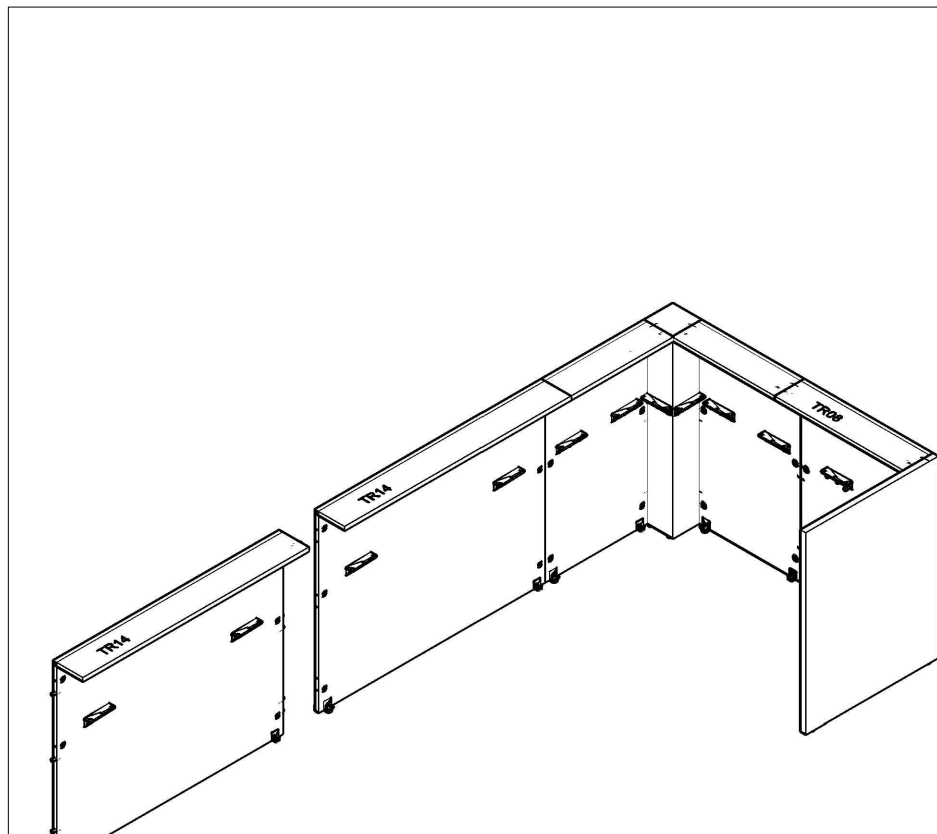


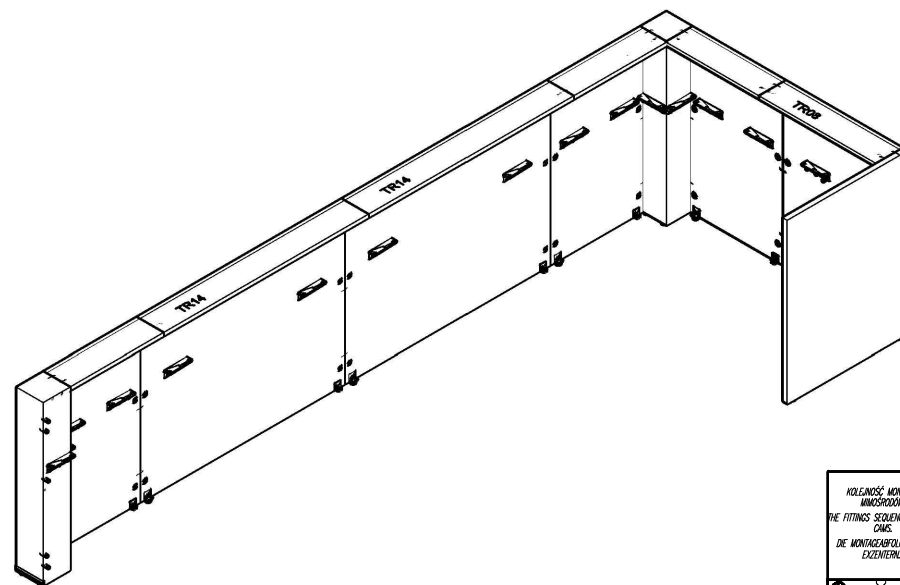
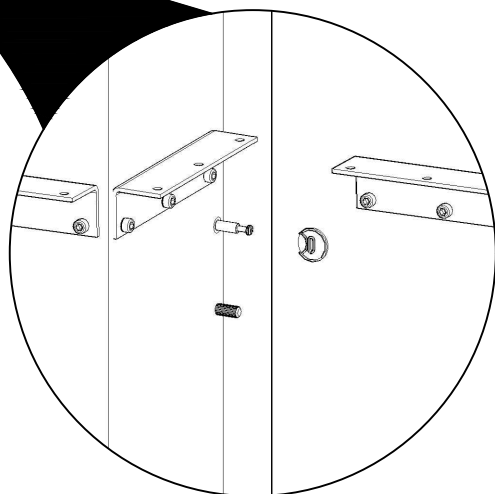
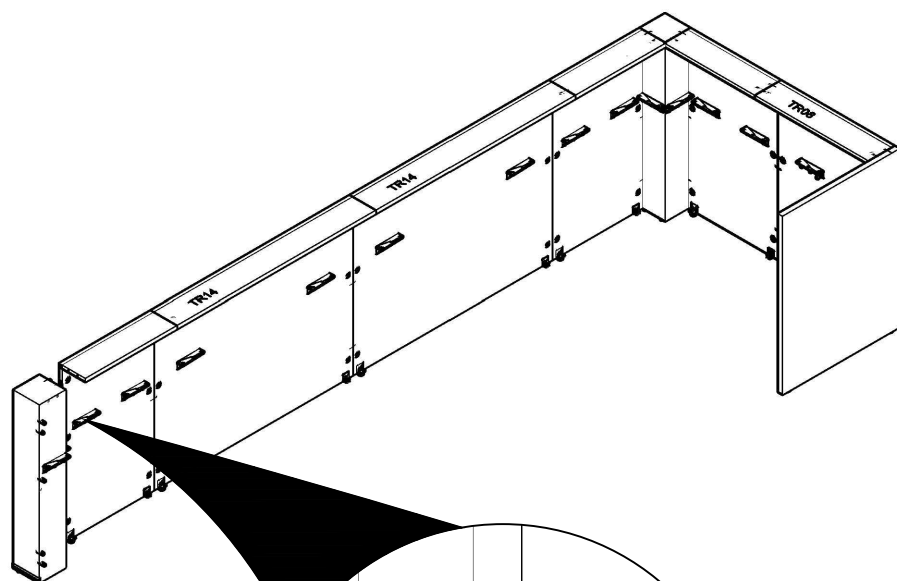
KOLANOS' MONTAŽU
MINISPODROB.
THE FITTING SEQUENCE OF THE
CAMS.
DE MONTAGEVOLGORDE VON
EXZENTERN.



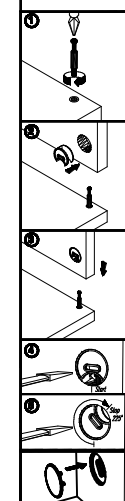
KOLANOS' MONTAŽU
MINISPODROB.
THE FITTING SEQUENCE OF THE
CAMS.
DE MONTAGEVOLGORDE VON
EXZENTERN.

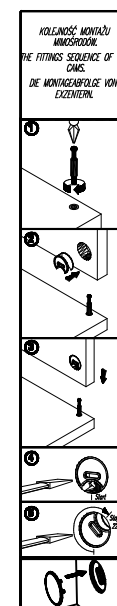
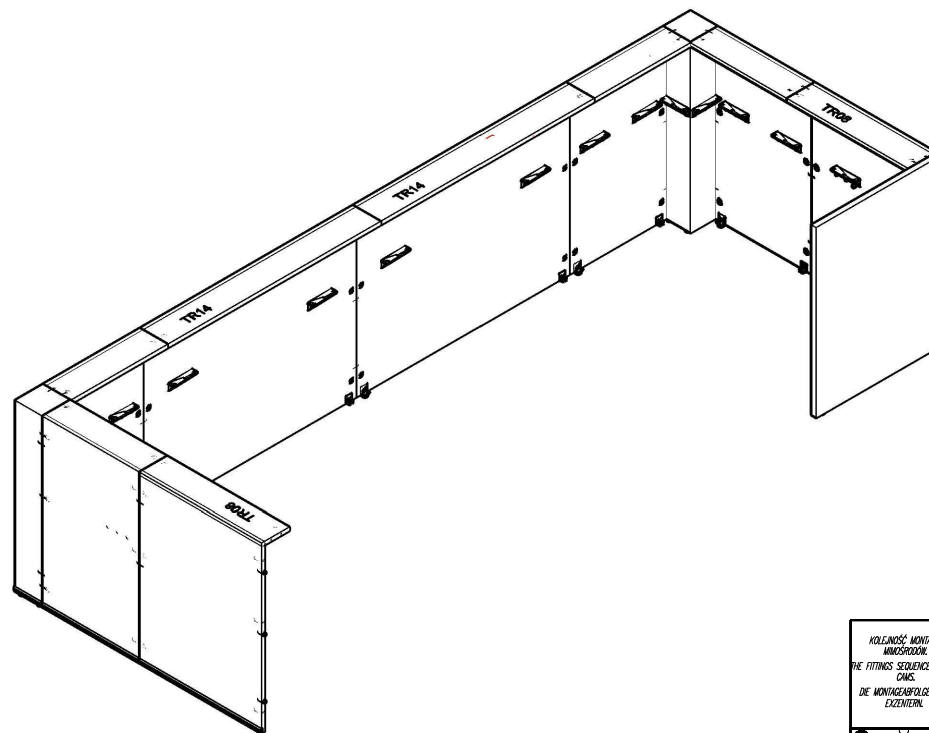
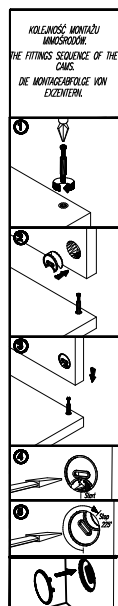
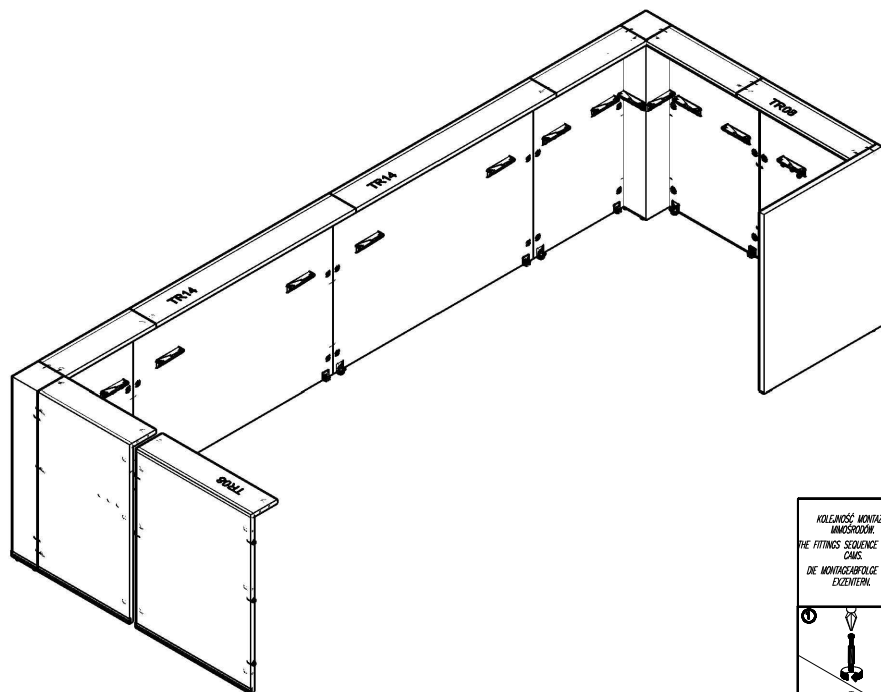


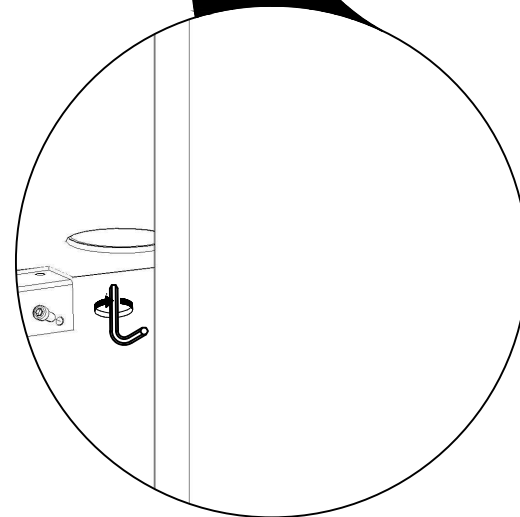
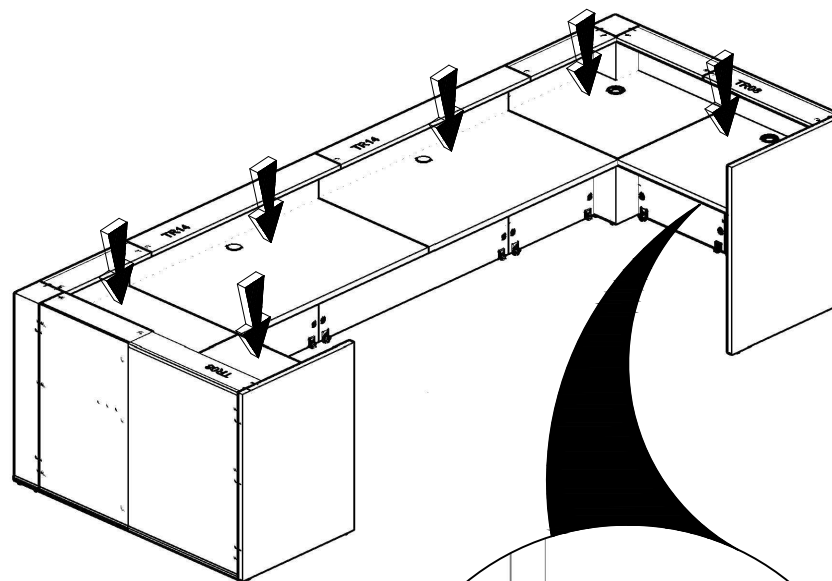
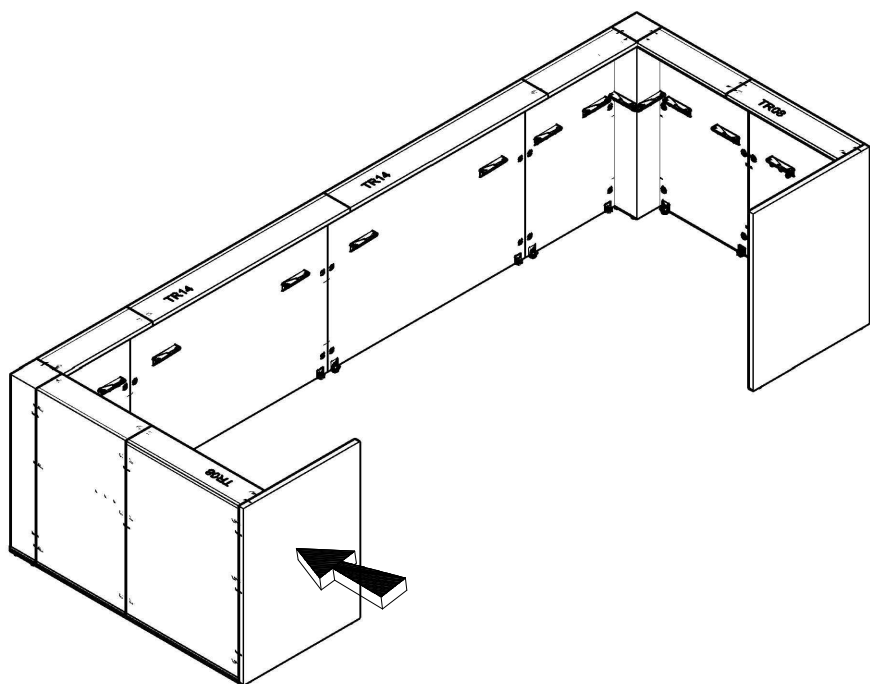


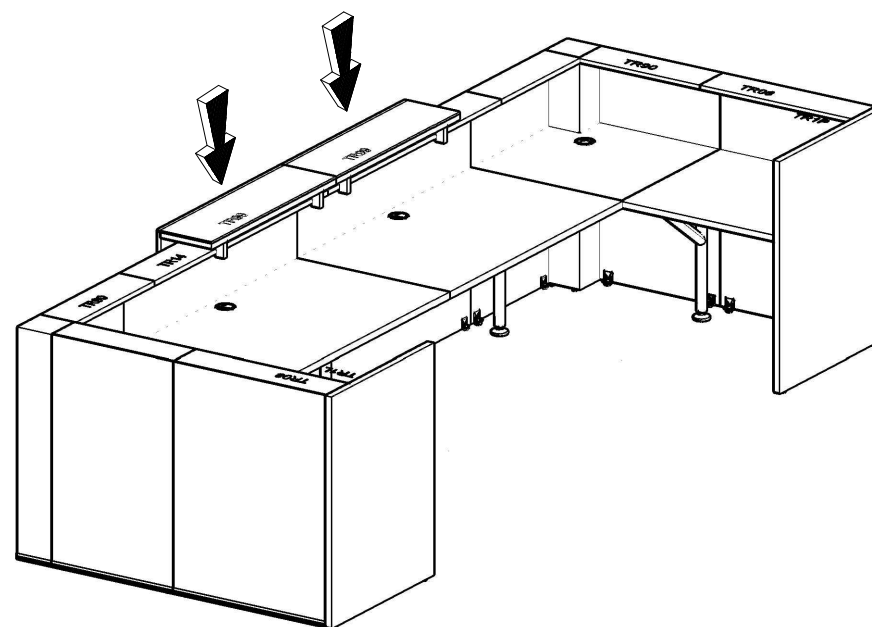
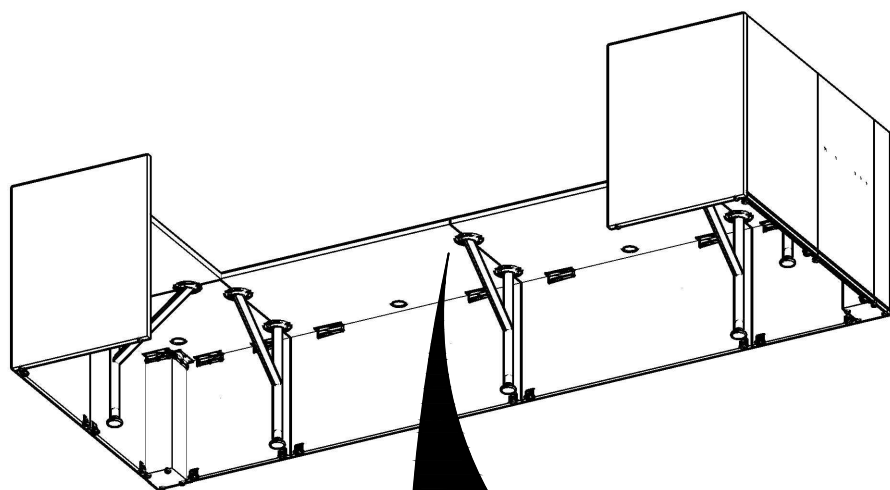


HOLLANDSE MONTA
HANGORDING.
THE FITTING SEQUENCE OF THE
CABS.
DE MONTAGEVOLGE VAN
EXCENTEREL.









LED INSTALLATION

