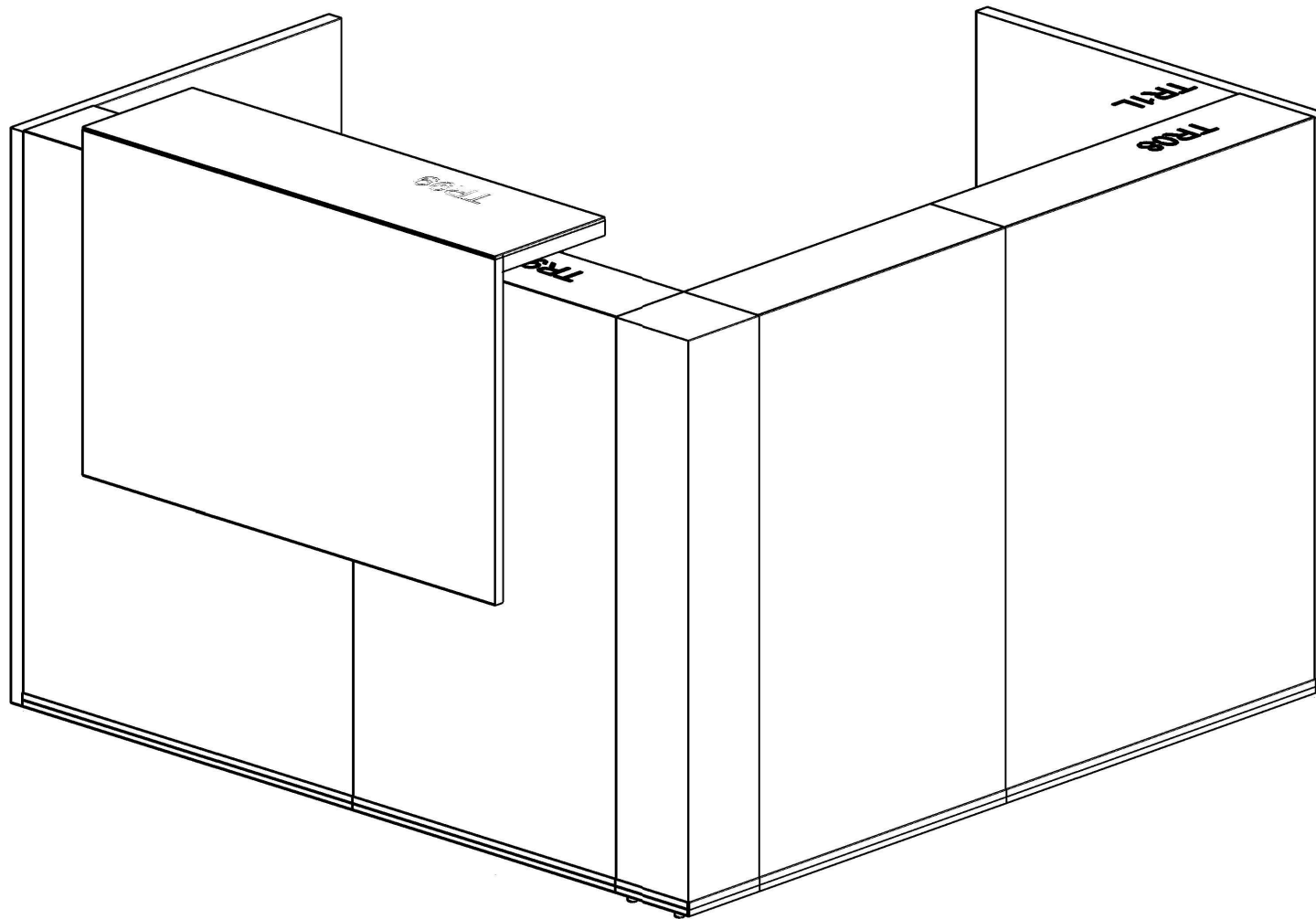
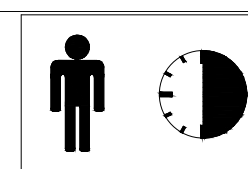


.mdd



TRA25

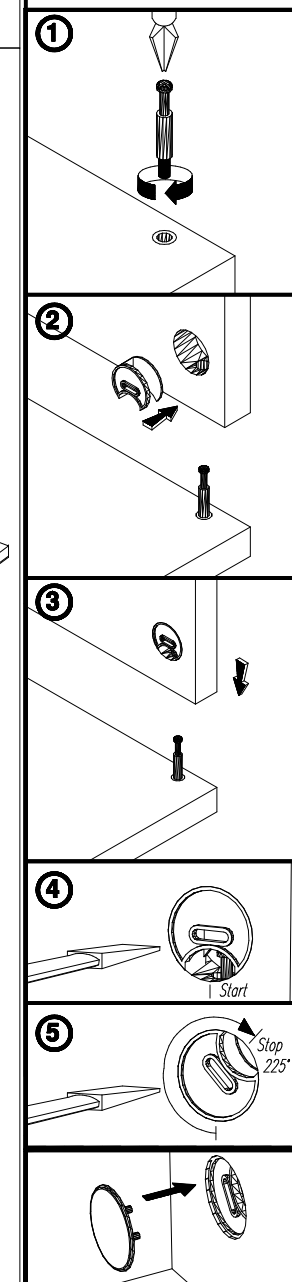
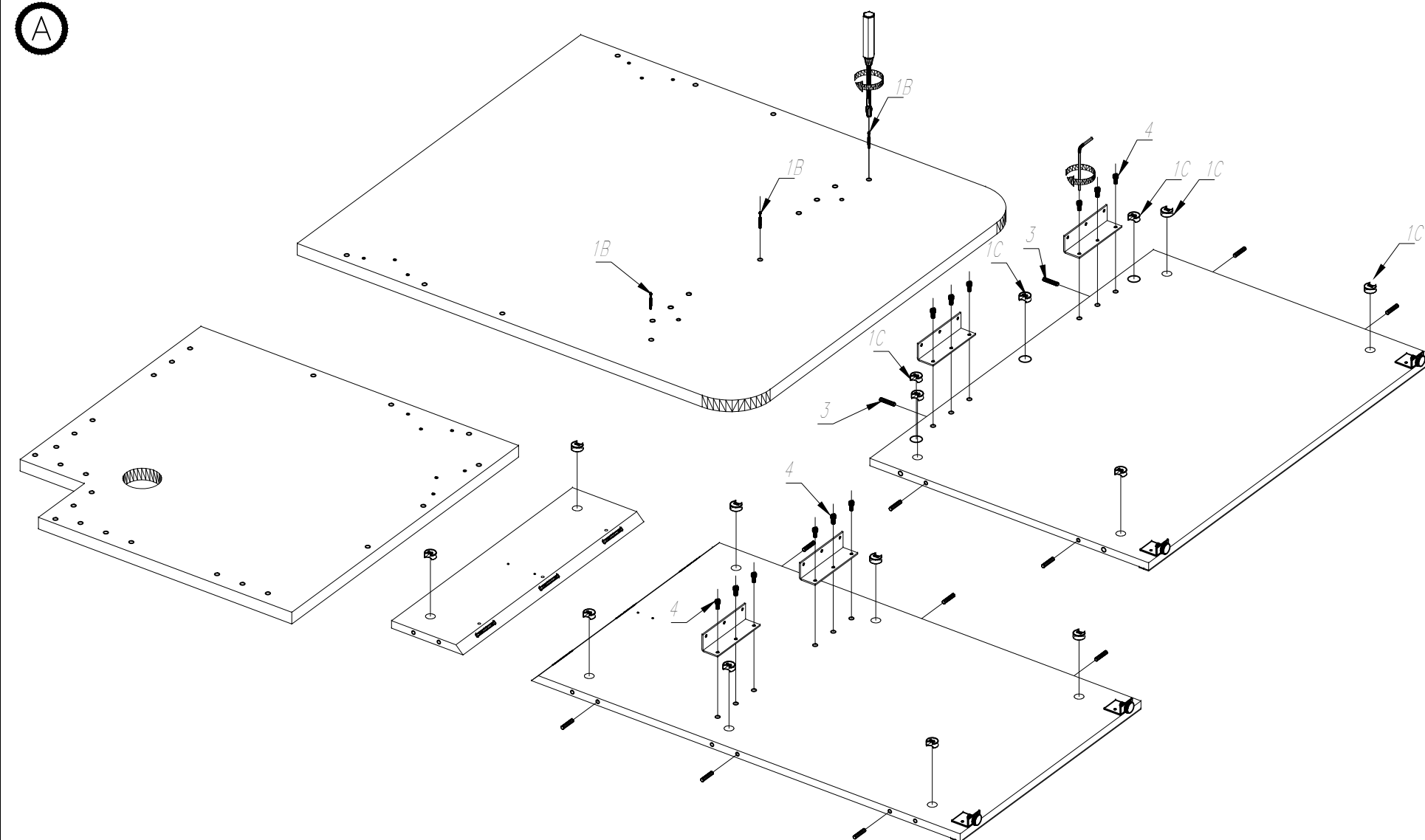


KOLEJNOŚĆ MONTAŻU
MIMOŚRODÓW.

THE FITTINGS SEQUENCE OF THE
CAMs.

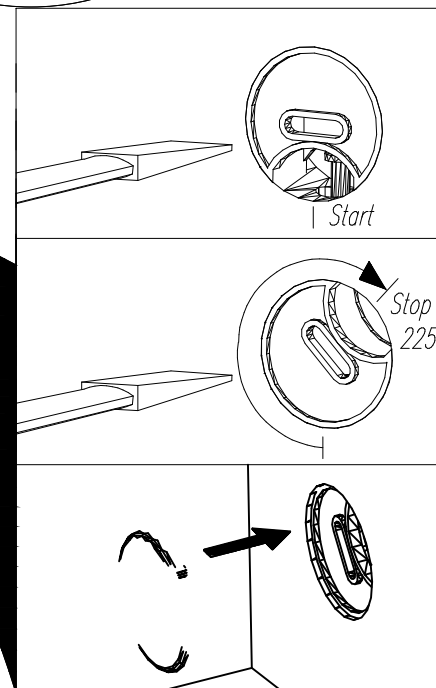
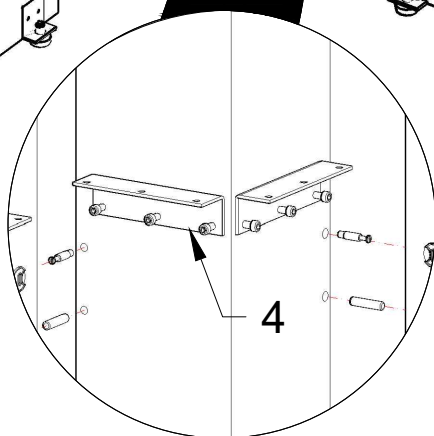
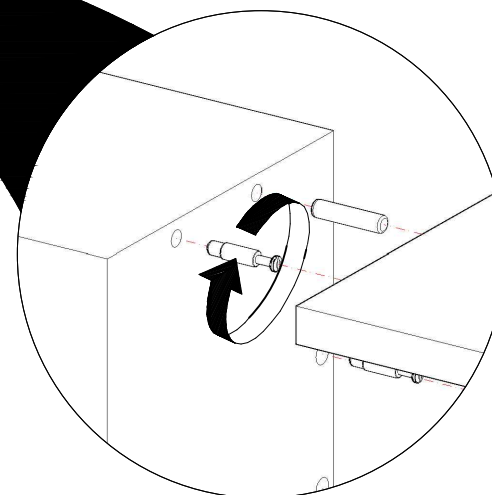
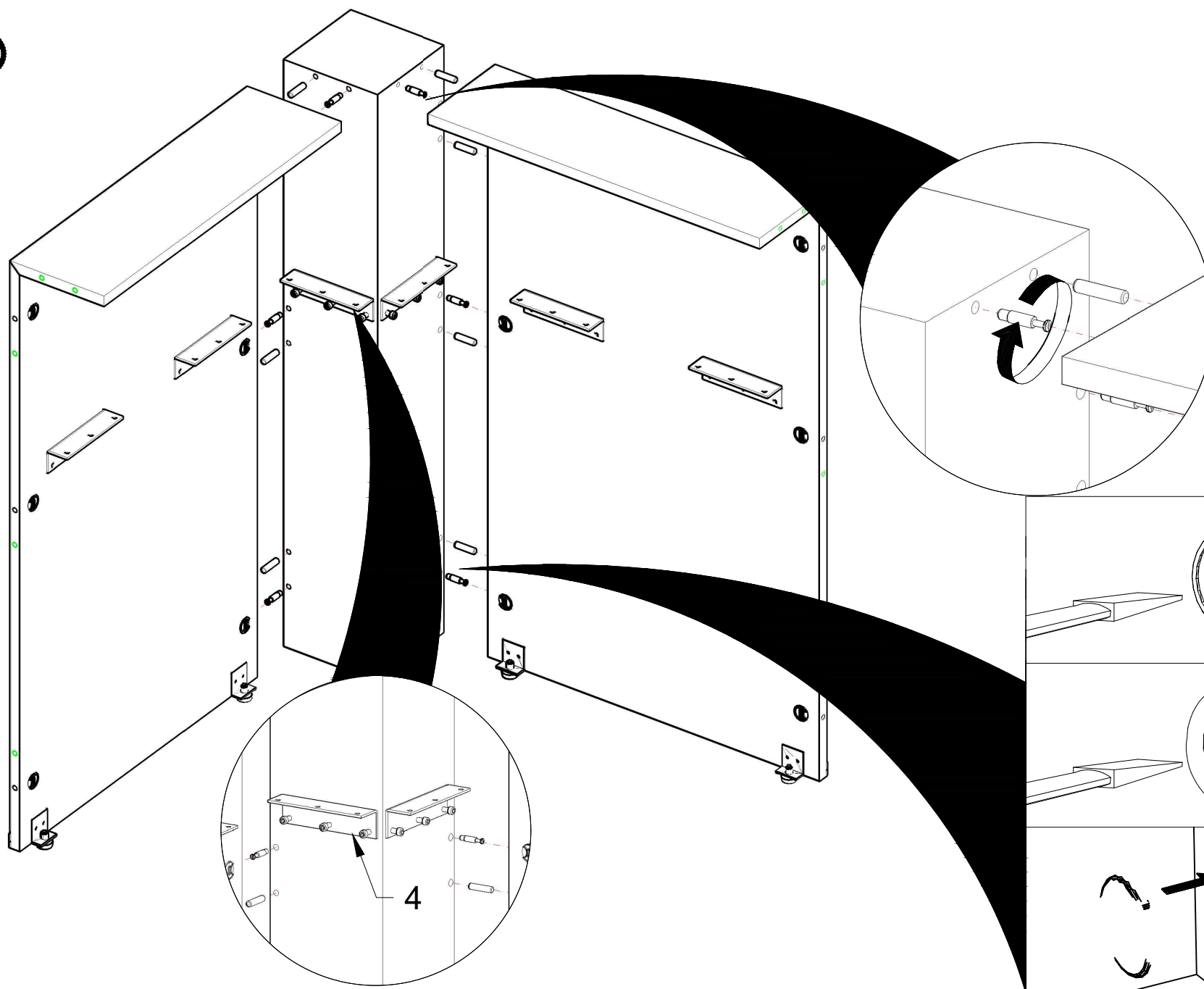
DIE MONTAGEABFOLGE VON
EXZENTERN.

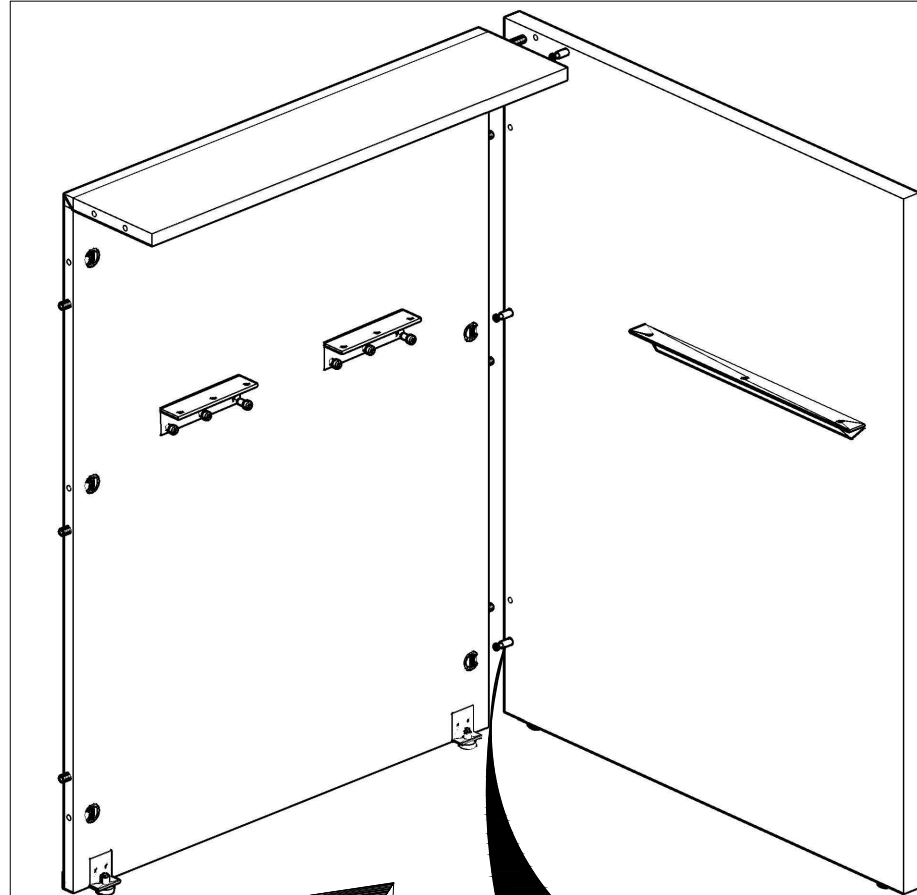
A



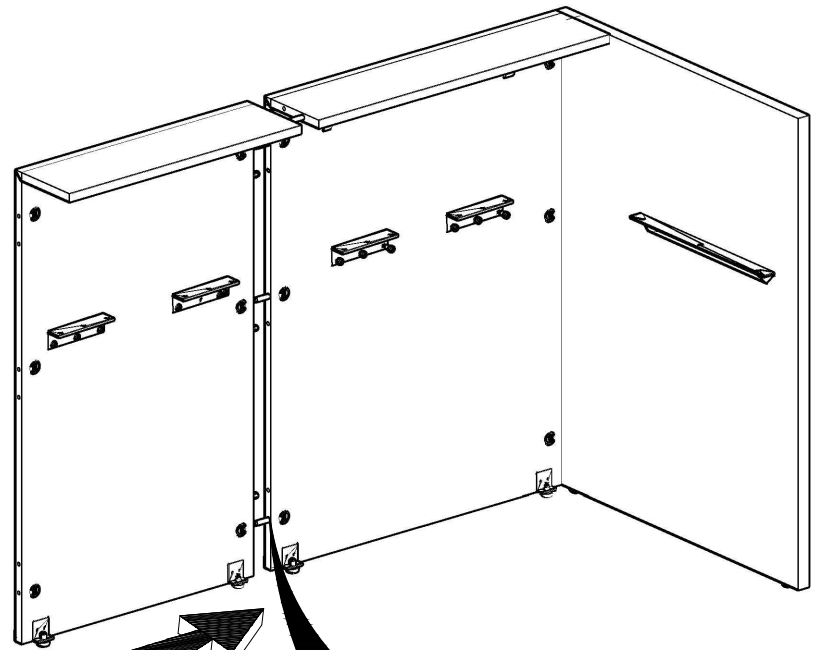
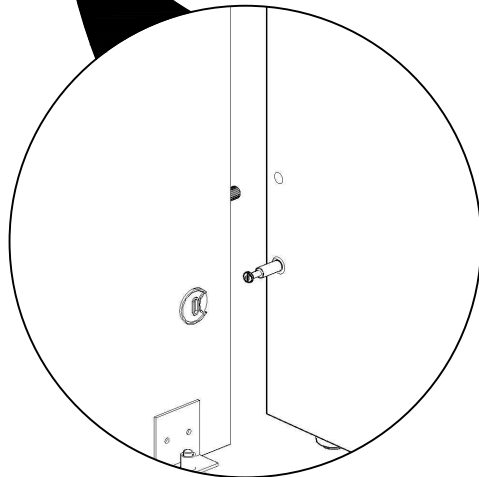


E

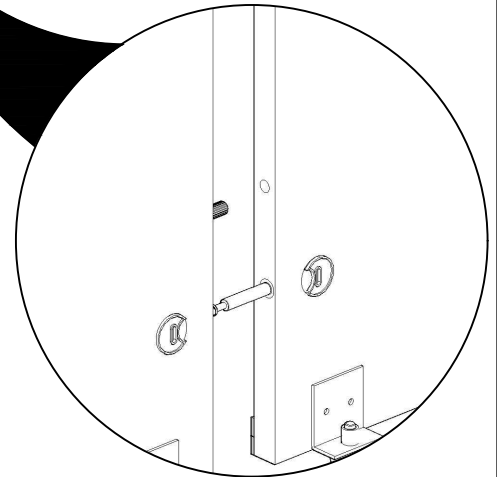


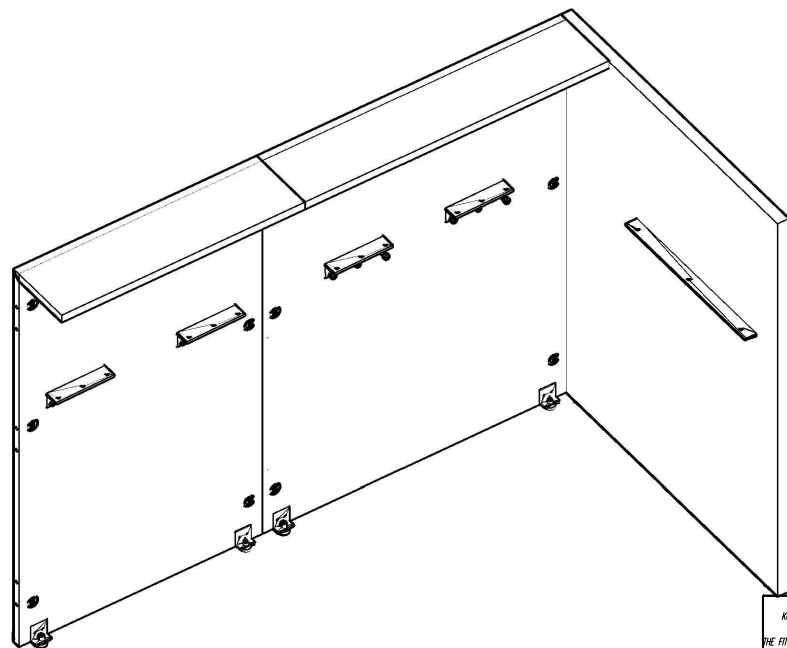


- KOLLENDRE MONTEURU
ANZUSCHAUEN.
THE FITTING SEQUENCE OF THE
CHMS.
DIE MONTAGEFOLGE VON
EXZENTRIK.
1. Insert the cam bolt into the side panel.
 2. Tighten the cam lock with the provided key.
 3. Insert the cam bolt into the back panel.
 4. Tighten the cam lock with the provided key.
 5. Insert the cam bolt into the side panel.
 6. Tighten the cam lock with the provided key.
 7. Insert the cam bolt into the back panel.
 8. Tighten the cam lock with the provided key.
 9. Insert the cam bolt into the side panel.
 10. Tighten the cam lock with the provided key.

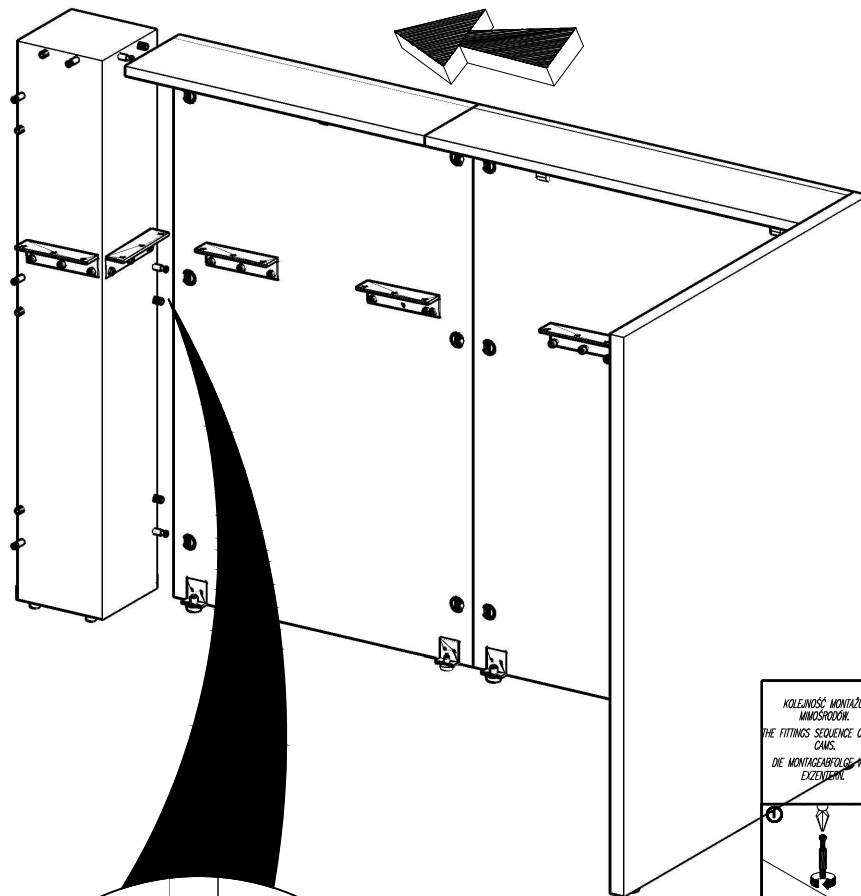
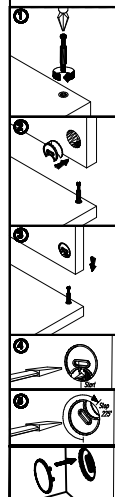


- KOLLENDRE MONTEURU
ANZUSCHAUEN.
THE FITTING SEQUENCE OF THE
CHMS.
DIE MONTAGEFOLGE VON
EXZENTRIK.
1. Insert the cam bolt into the side panel.
 2. Tighten the cam lock with the provided key.
 3. Insert the cam bolt into the back panel.
 4. Tighten the cam lock with the provided key.
 5. Insert the cam bolt into the side panel.
 6. Tighten the cam lock with the provided key.
 7. Insert the cam bolt into the back panel.
 8. Tighten the cam lock with the provided key.
 9. Insert the cam bolt into the side panel.
 10. Tighten the cam lock with the provided key.

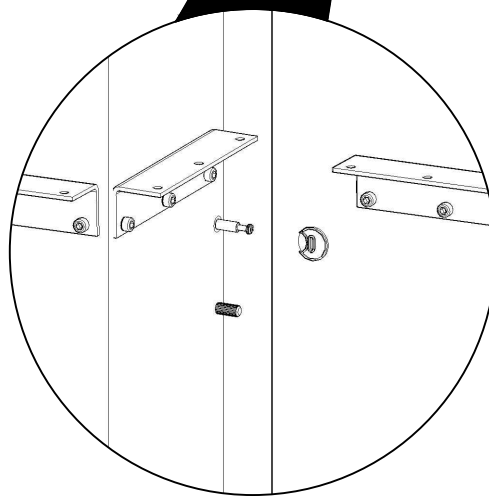
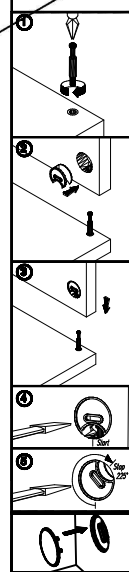


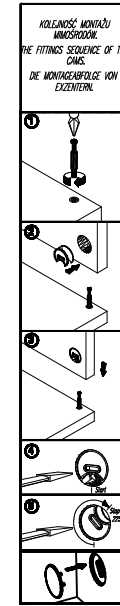
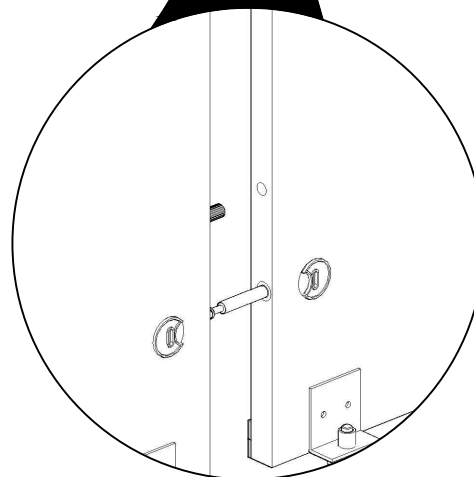
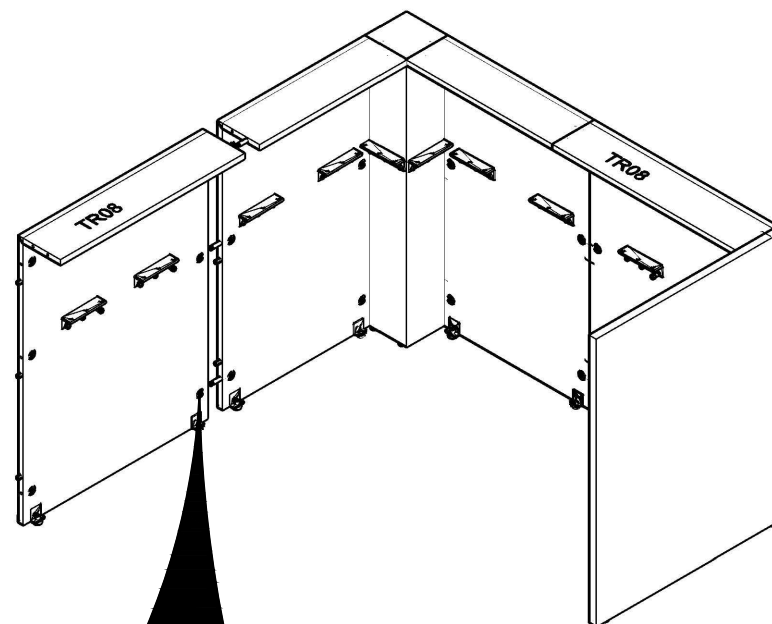
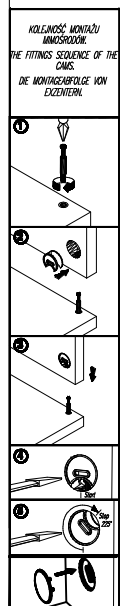
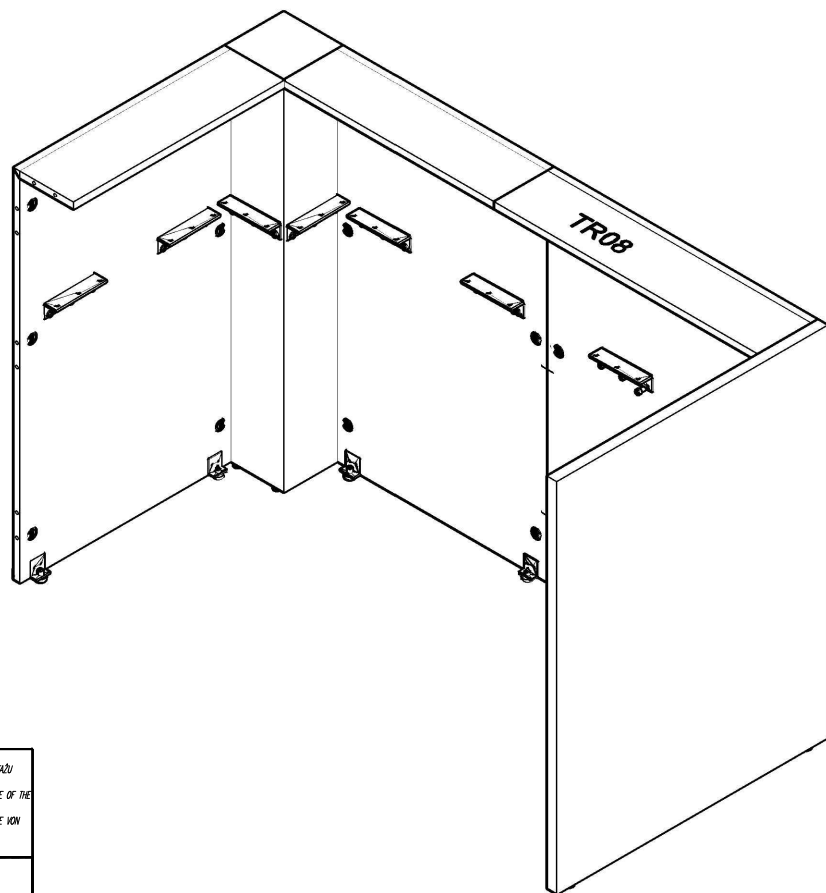


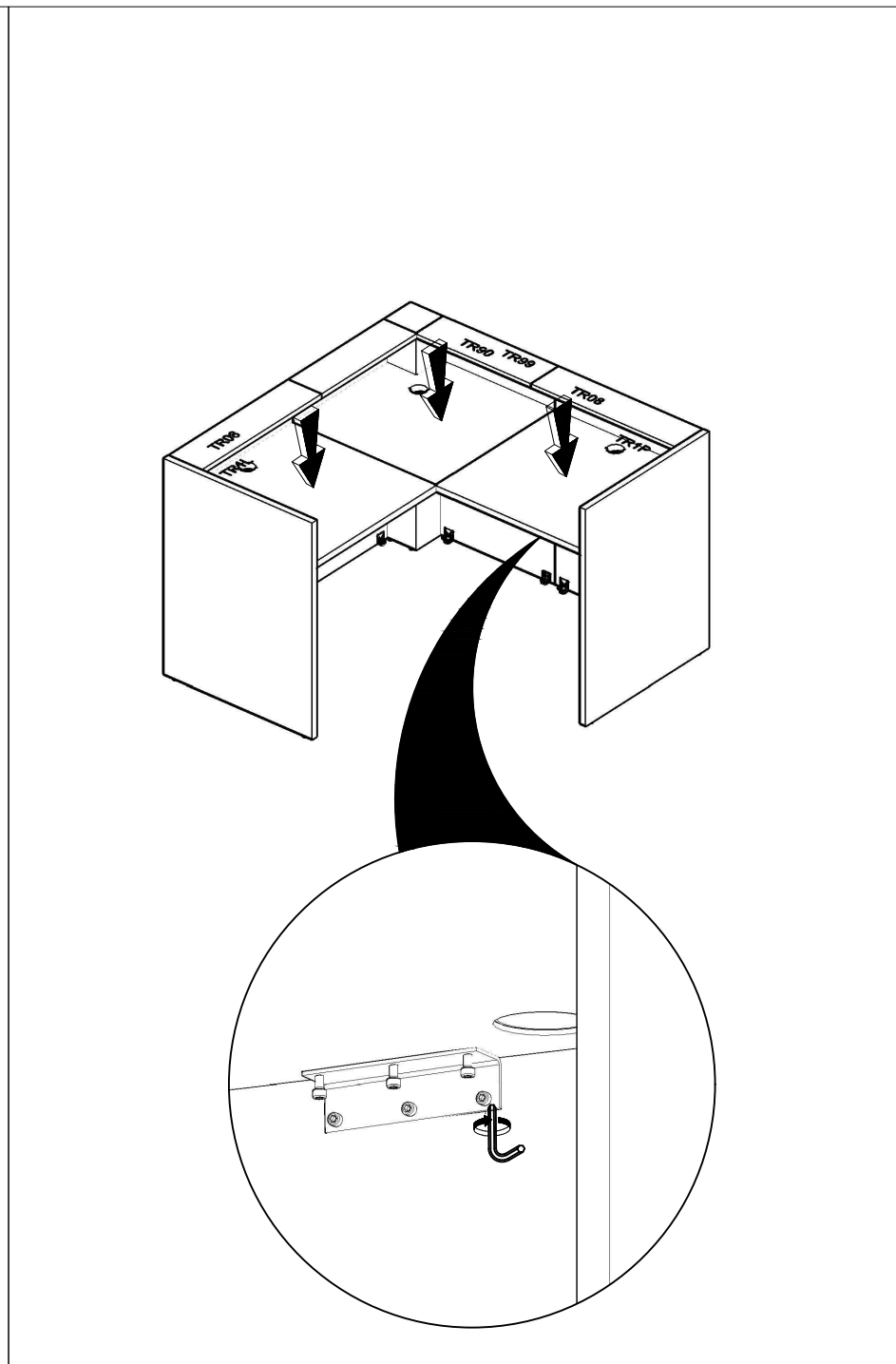
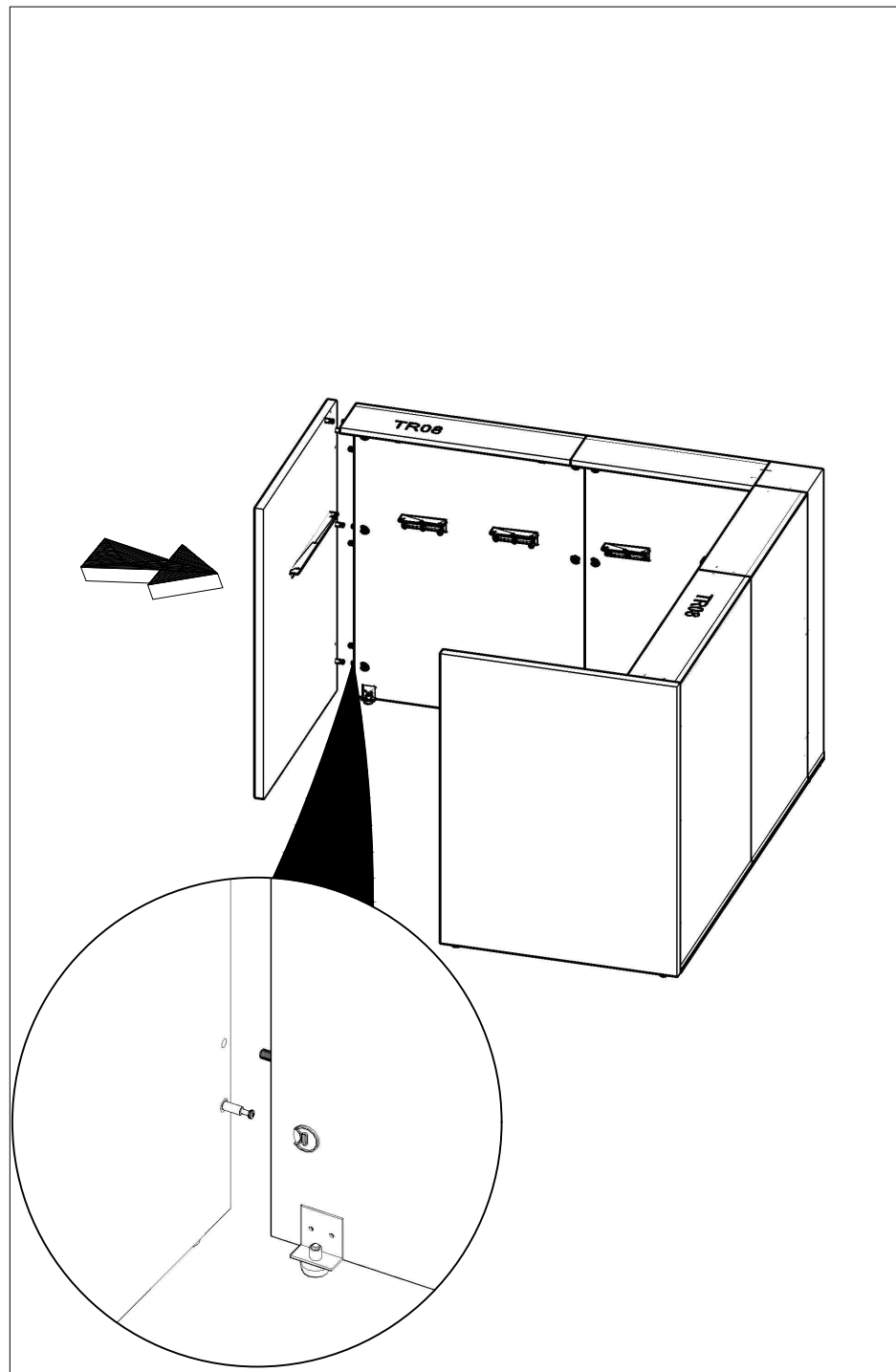
KOLEJNOŚĆ MONTAŻU
MIMOŚRODKIEM.
THE FITTING SEQUENCE OF THE
CAMS.
DIE MONTAGEABFOLGE VON
EXZENTERN.

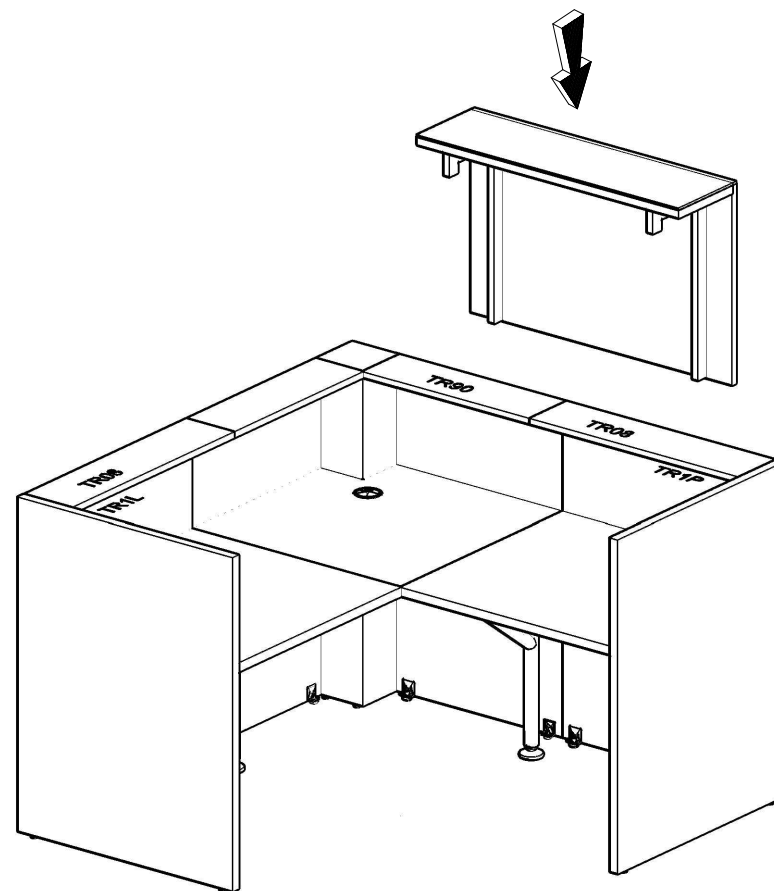
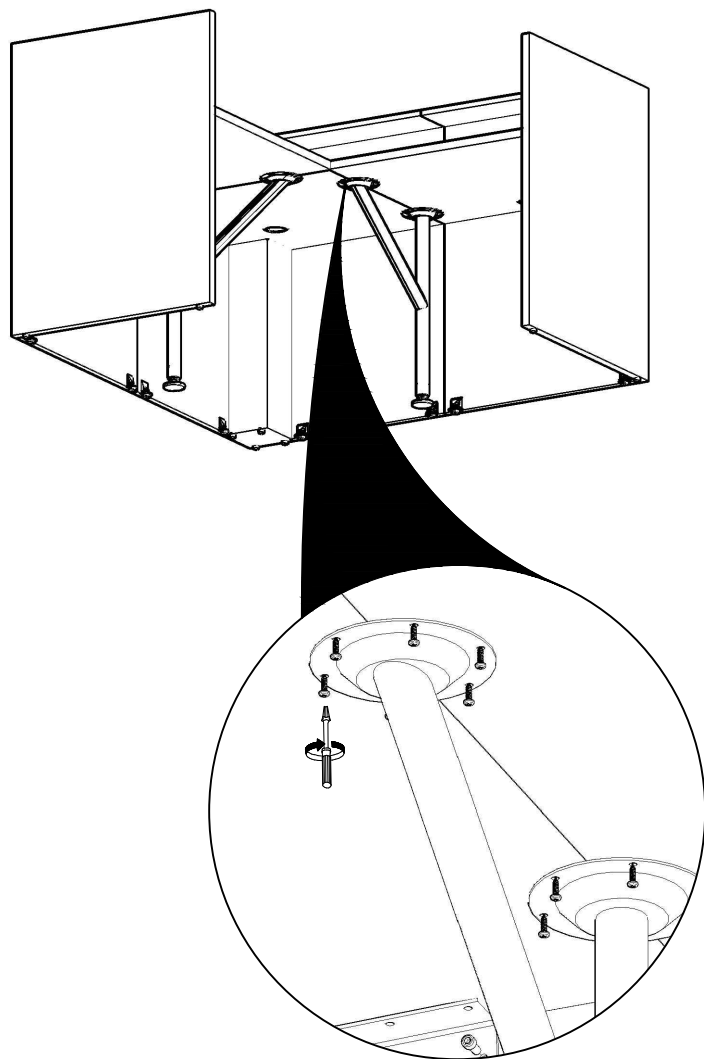


KOLEJNOŚĆ MONTAŻU
MIMOŚRODKIEM.
THE FITTING SEQUENCE OF THE
CAMS.
DIE MONTAGEABFOLGE VON
EXZENTERN.









LED INSTALLATION

